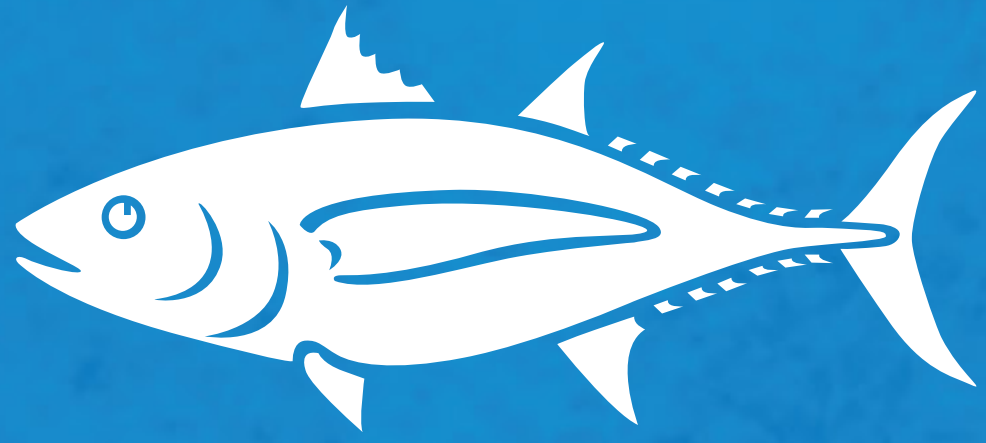
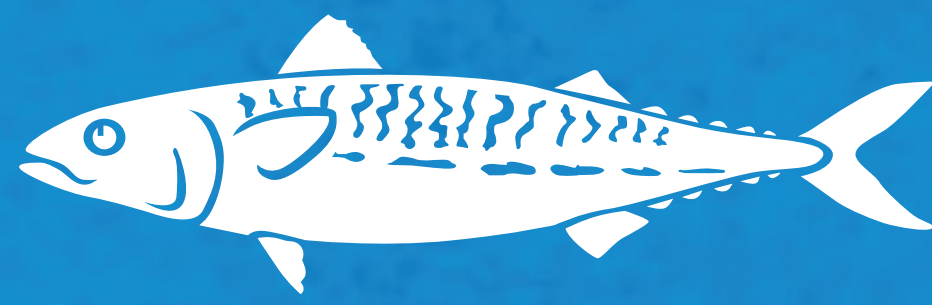


# Ocean Wise™ Recommended Sushi Choices



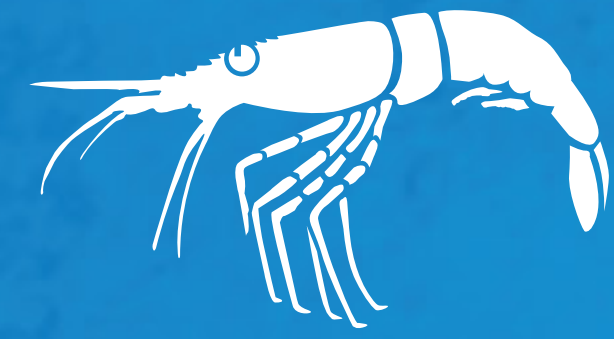
## **ALBACORE TUNA - BINCHO**

PACIFIC  
*Pole or troll caught*



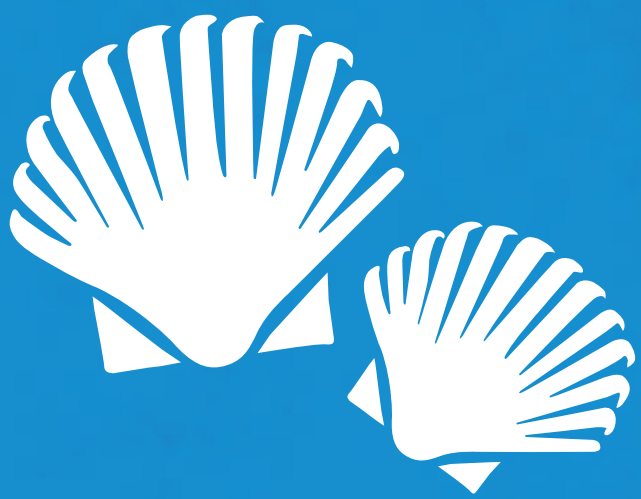
## **MACKEREL - SABA**

ATLANTIC  
*Purse seine caught*



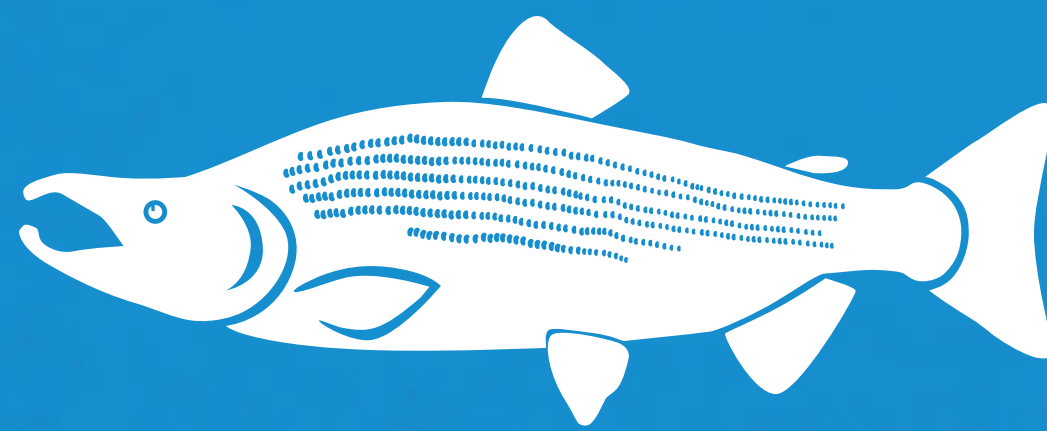
## **SPOT PRAWNS - AMAEBI**

B.C.  
*Trap caught*



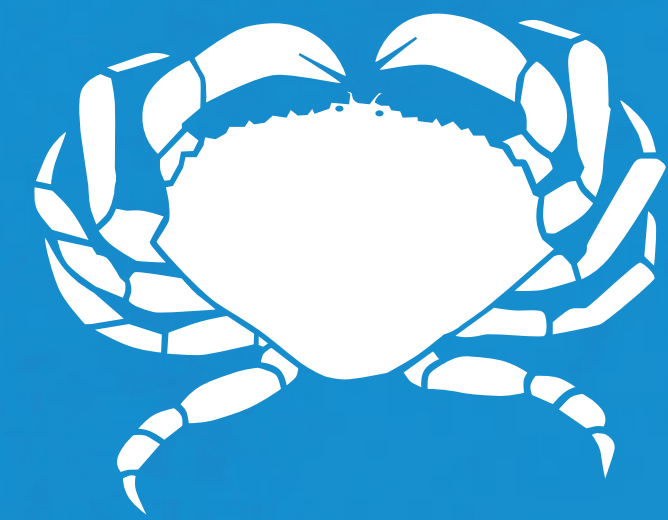
## **SCALLOPS - HOTATE**

WORLDWIDE  
*Off-bottom farmed*



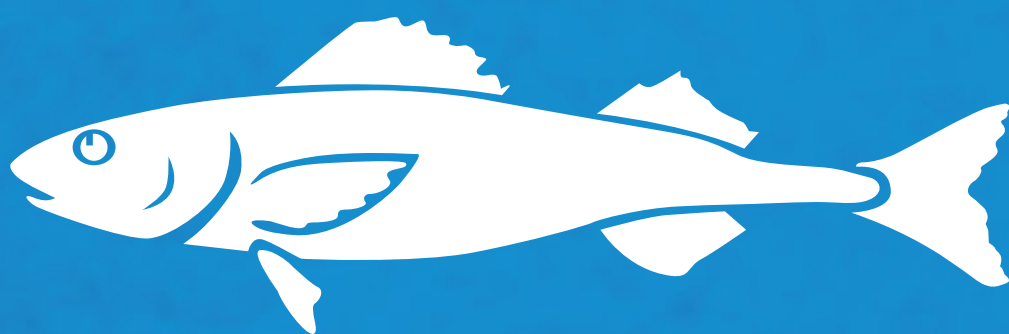
## **SALMON - SAKE** CHINOOK, CHUM, COHO, PINK & SOCKEYE

B.C. & ALASKA  
*Seine net; gill net or troll caught*



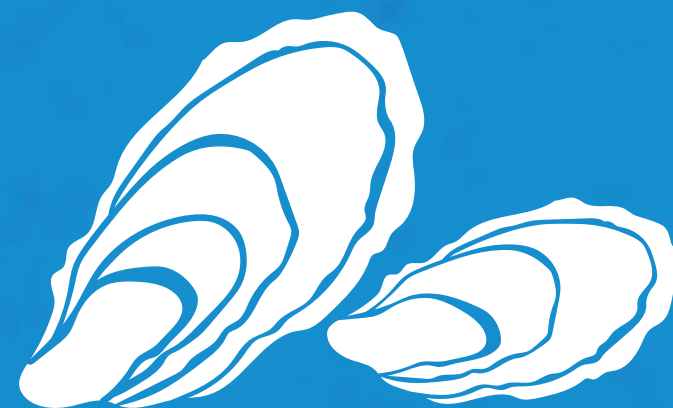
## **DUNGENESS CRAB - KANI**

PACIFIC U.S. & CANADA  
*Trap caught*



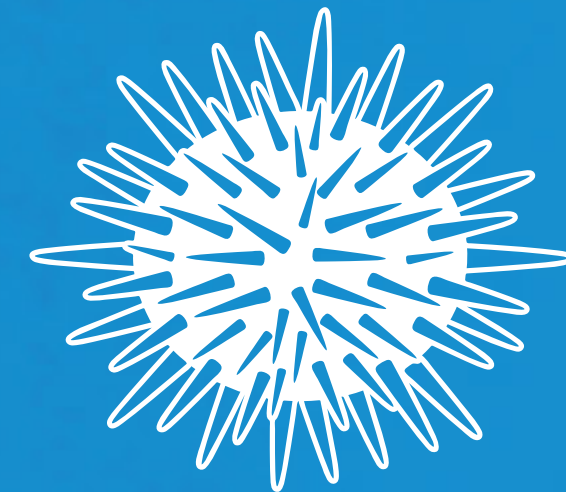
## **SABLEFISH - GINDARA**

B.C. & ALASKA  
*Trap or bottom longline caught*



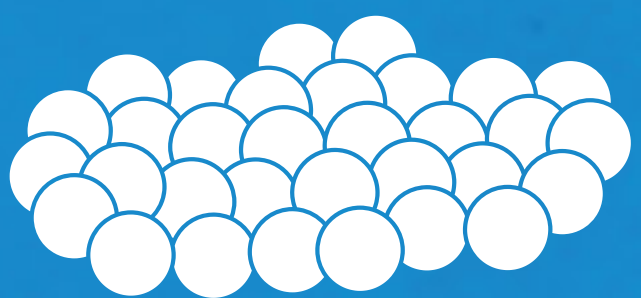
## **OYSTERS - KAKI**

WORLDWIDE  
*Off-bottom farmed*



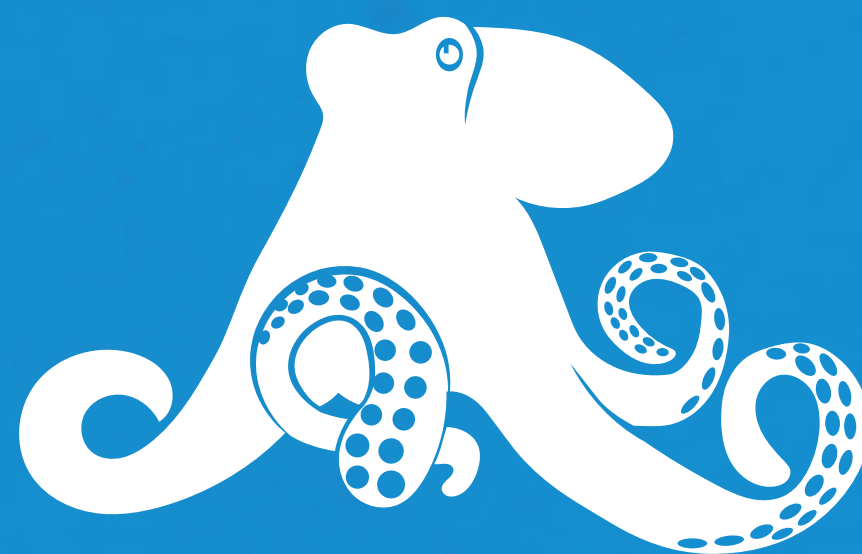
## **SEA URCHIN - UNI**

B.C. & ATLANTIC CANADA  
*Diver caught*



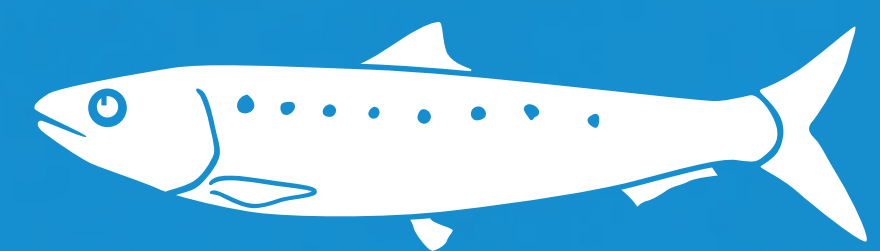
## **SALMON ROE - IKURA**

B.C. & ALASKA  
*Seine net; gill net or troll caught*



## **GIANT PACIFIC OCTOPUS - TAKO**

B.C.  
*Trap or diver caught*



## **PACIFIC SARDINE - IWASHI**

PACIFIC U.S. & CANADA  
*Purse seine caught*

Overfishing is the biggest issue facing our oceans today. Look for the Ocean Wise symbol for Vancouver Aquarium's assurance of an ocean-friendly seafood choice.

[oceanwise.ca](http://oceanwise.ca) [facebook.com/ocean.wise](https://facebook.com/ocean.wise) [twitter.com/ocean\\_wise](https://twitter.com/ocean_wise)

vancouver aquarium  
 **ocean  
wise™**